

Degree of interest: ★★☆☆

Visibility: ●●●●○

Accesses: ◆◆◆◆◇



**Times:**

**1st competitor start SS 4 h. 13:08 - SS 8 h. 17:30**

**roads closed at 10:08**

**Features:**

GPS: **40° 36.760'N - 9° 20.716'E**

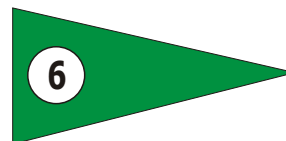
Distance from start: **0,16 km** SS finish at: **20,123 km**

Location: **07020 Alà dei Sardi (OT)**

**Description:**

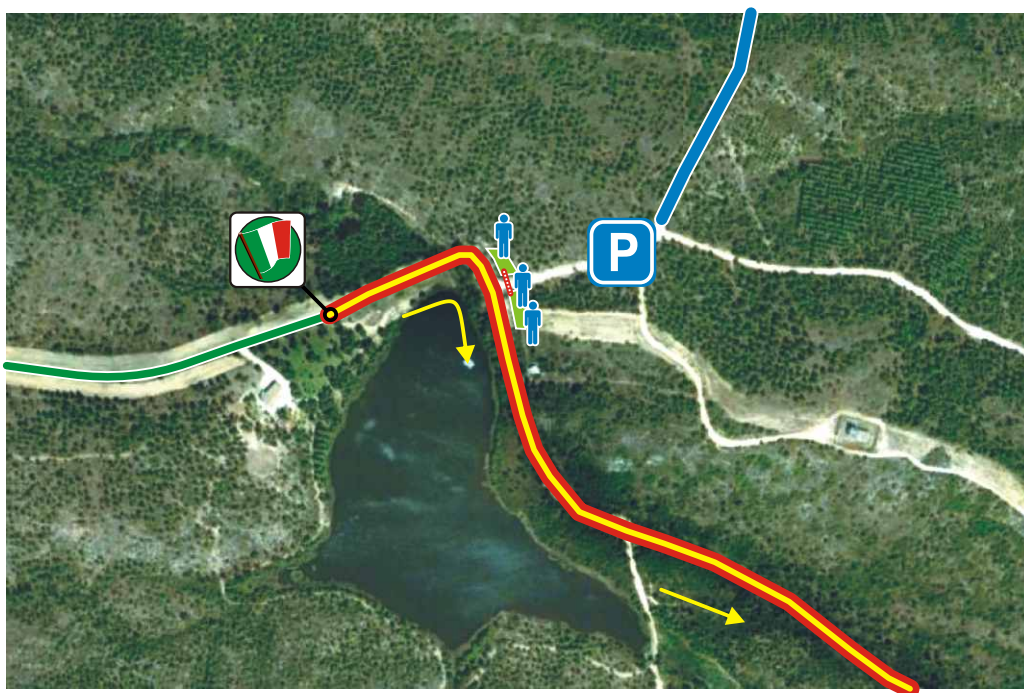
**Interesting point: from the top of the hill is possible to see the START, the first turns around the lake of "Coiluna" and the next streight.**

**Acces road sign:**



**How to get there:**

1. Cross Alà dei Sardi and turn left at the junction with the statue (**foto 1**);
2. Go straight for about 4km, then turn left (**foto 2**);
3. after the crossroad in **foto 2** see the attached map.



After **foto 2** see the attached map